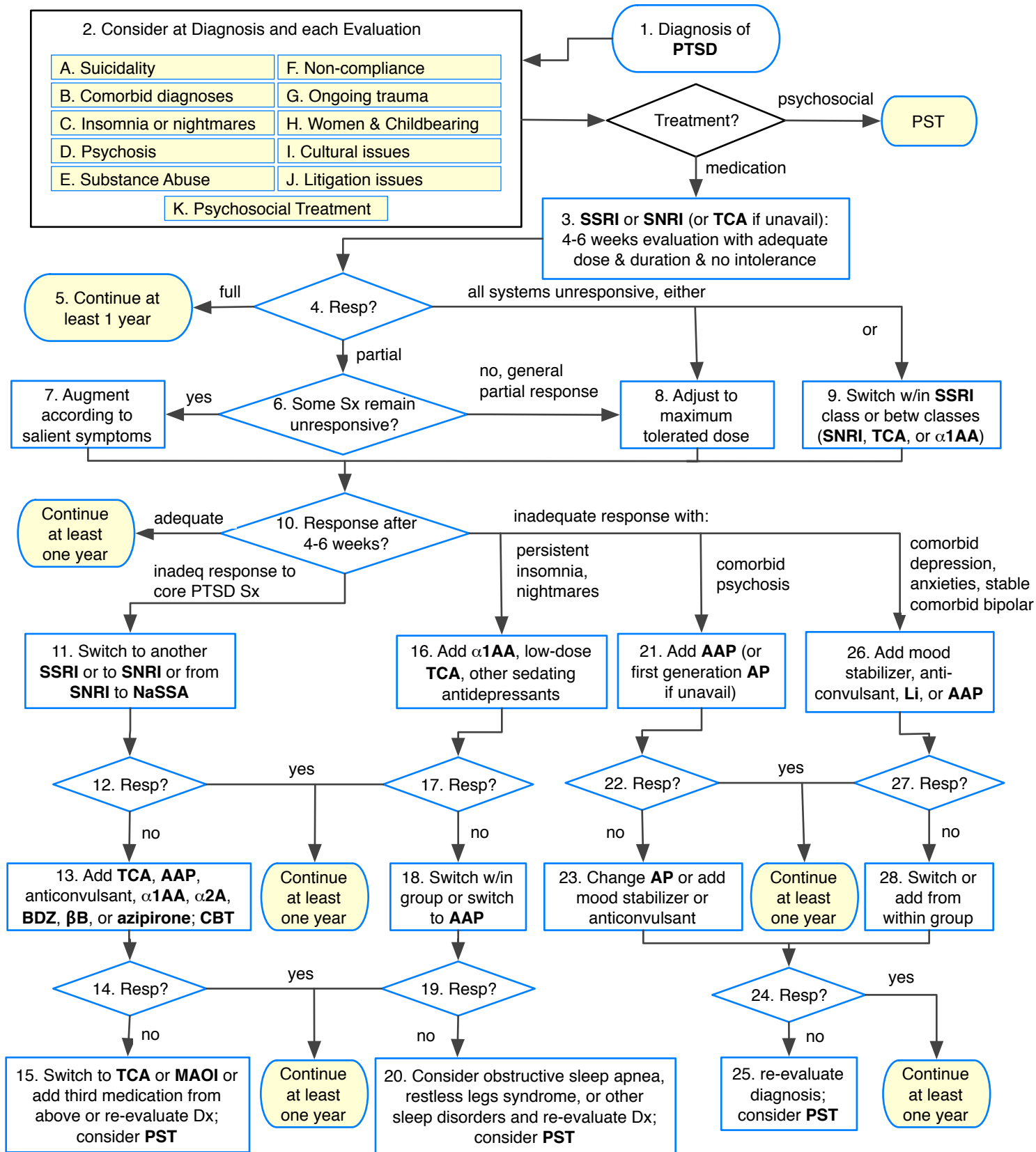


IPAP Post-Traumatic Stress Disorder (PTSD) Algorithm v. 1.0 (June 2005)

FOR HEALTH PROFESSIONAL USE ONLY. NOT FOR PATIENT USE.



KEY: $\alpha 1AA = \alpha_1$ -adrenergic antagonist; $\alpha 2A = \alpha_2$ -agonist; AP=antipsychotic; AAP=atypical antipsychotic; βB =beta-blocker; BDZ=benzodiazepine; CBT=cognitive behavioral therapy; Dx=Diagnosis; Li=Lithium; MAOI = monamine oxidase inhibitor; NaSSA = noradrenergic and selective serotonergic antidepressant; PST=Psychosocial Treatment; Resp=Response; SNRI = serotonin and noradrenaline reuptake inhibitor; SSRI = selective serotonin reuptake inhibitor; Sx=Symptoms; TCA = tricyclic antidepressant